

## Warranty Terms

Warranty valid for 12 months (one year), starting from the date of purchase, if purchased from an authorized Marts Digital dealer. Will be covered by warranty components and/or parts comproved that shows failures in process manufacture or damaged components.

Warranty **don't** cover:

- Equipment, parts or components previously altered by unauthorized people.
- Damages caused by accidents (fall, crash, etc) or natural disasters (overflow, burning, etc).
- Improper instalation (improper wiring, abuse, installation out of specifications).
- Shipping costs.

In case needed any repair, contact the dealer for warranty instructions.

IMPORTED BY:  
DIGITAL MARTS  
AUTOMOTIVE ACCESSORIES

Fone: +55 (11) 998-551-605  
CNPJ: 41.190.197/0001-56

OBS: If out of warranty, repair costs (if needed) will be charged from client.

e-mail: [sac@digitalmarts.com.br](mailto:sac@digitalmarts.com.br)

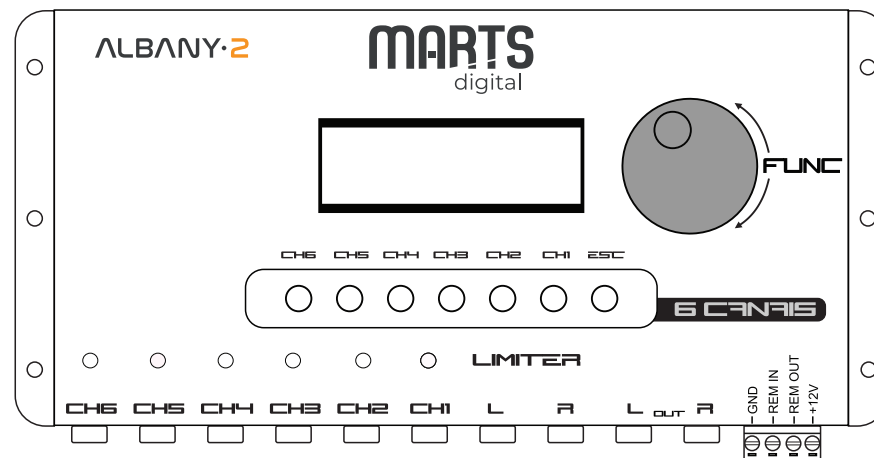
Marts Digital reserved rights to alter characteristics of the product without previously advice.

Warranty registration:

Name:.....  
Register:..... Date:..... Phone:.....  
Address:.....  
Store:..... Phone:.....

**MARTS**  
digital

# INSTRUCTION MANUAL



**ALBANY 2**

## Index

1. Functional Diagram .....	2
2. Introduction .....	3
3. Installation .....	4
4. Element's Description .....	4
5. Menu and Configurations .....	5
5.1 Accessing the menu .....	5
5.2 Main Gain .....	5
5.3 Routing channel Output .....	5
5.4 Gain .....	5
5.5 Crossover .....	6
5.6 Polarity / Phase .....	6
5.7 Delay .....	6
5.8 Eq Channel .....	6
5.9 Eq In .....	7
5.10 Limiter .....	7
5.11 Cross / Eq / Lim / All .....	7
5.12 Pink noise Generator .....	8
5.13 Password .....	8
5.14 Mute .....	8
5.15 Reset .....	8
6. Bluetooth Interface .....	9
6.1 Functions .....	9
6.2 Pairing .....	10
7. Technical specifications .....	10

Access:

[www.youtube.com/digitalmartsbr](http://www.youtube.com/digitalmartsbr)  
[www.facebook.com/digitalmartsbr](http://www.facebook.com/digitalmartsbr)

## 6.2 - Pairing

- Download the app on Google Play Store or Apple Store.
- Turn on the device's location.
- Turn on the Bluetooth.
- Open the app.
- Automatically the app will find the processor.
- Select the processor.
- Type the password.
- Factory's password: 0000.
- To change the factory password, type your new password again and press the Encoder.
- To change the password again, you must reset the processor.

Compatible with all IOS  
versions and Android 4.3  
or later

## 7. Technical Specifications

### Inputs

Kind	Unbalanced
Connection	Rca
Input max level	4Vpp (1,4Vrms)
Input impedance	47kΩ

### Outputs (1,2,3,4,5,6)

Kind	Unbalanced
Connection	Rca
Input max level	10Vpp (3,5 Vrms)
Input impedance	470Ω

### Technical information

Resolution	24 Bits
Sample frequency	48 Khz
Latency frequency	1,08ms
Range frequency	15Hz a 22KHz (-1db)
THD+N max	0,01%
Signal Noise Ratio	100dB

### Power Supply

Voltage	10 ~ 15Vdc
Consumption	300mA (5w)
Fuse	2 A

### Dimensions(H x L x D)

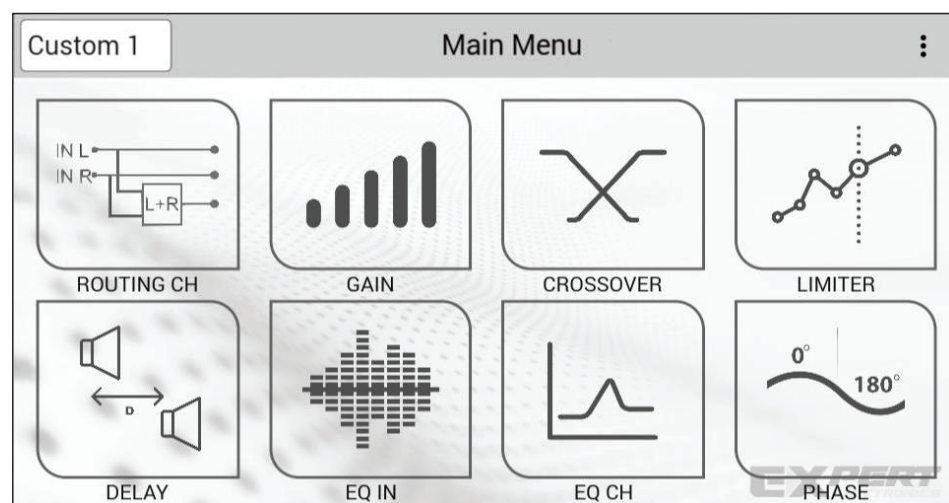
Weight	120 x 250 x 30mm
	0,42 Kg

## 6 - Bluetooth interface

Through a didactic and intuitive interface, it is possible to do all the processor's configurations from Marts Digital by smartphone or tablet, so making it easy the system alignment, it can be done on front from your audio system on real time.

- The app can be downloaded directly on Google Play Store or Apple Store for free.

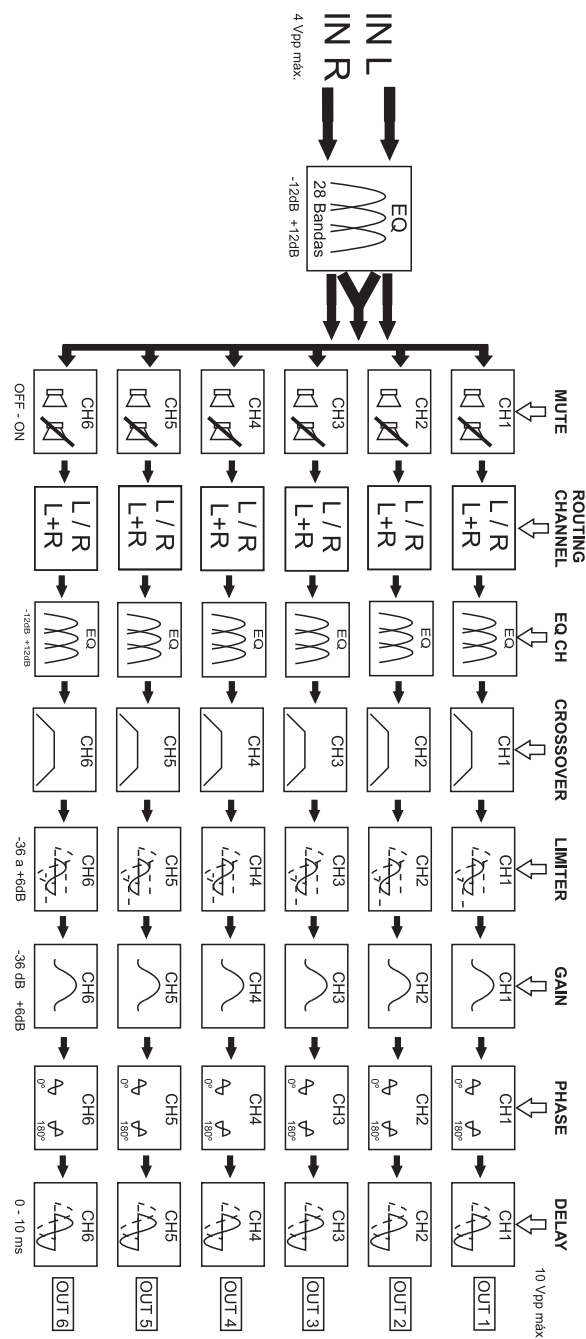
- The app is available to processors of the Connect line, but there is a mode demo, to you learn how it works for the people who doesn't have some Marts Digital processor yet.



### 6.1 Functions

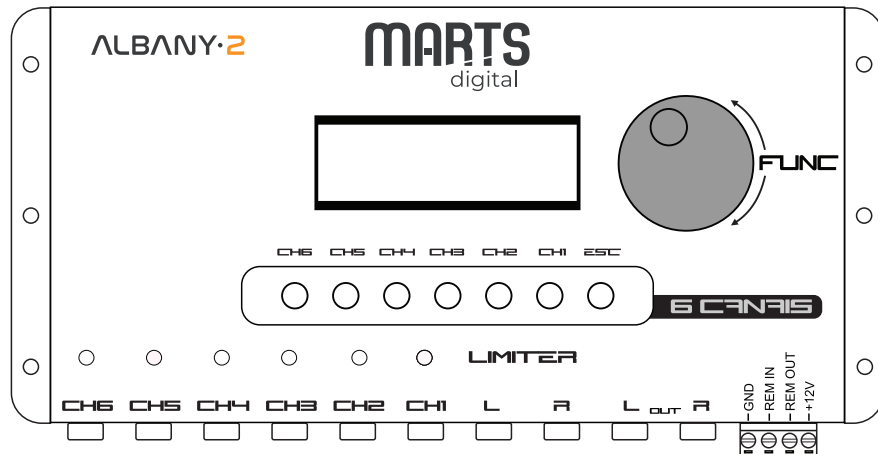
- ROUTING CH
- GAIN
- CROSSOVER
- LIMITER
- DELAY
- EQ IN
- EQ CH
- PHASE
- PRESET
- PASSWORD

## 1 - Functional Diagram



## 2 - Introduction

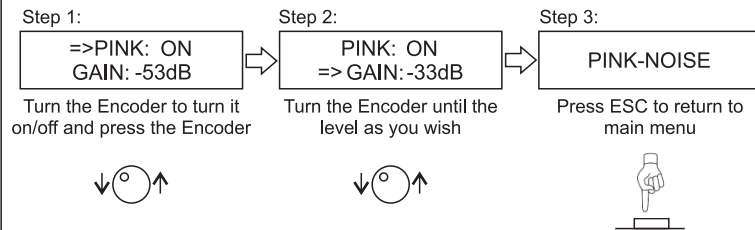
# ALBANY·2



- 2 Inputs RCA and 2 RCA Linked outputs.
- 6 independent outputs.
- Routing Channels.
- Input equalizer with 28 bands between 1/4 octave.
- Parametric equalizer with 3 independent band per channel.
- Crossover with filters: Butterworth, Linkwitz-Riley and Bessel, with attenuations from 6dB/8<sup>a</sup>.
- Independent Delay per channel.
- Automatic or manual Limiter function with Threshold, Attack and Decay.
- Polarity Inversion.
- Input gain adjustable.
- Independent Mute per channel.
- Pink-Noise generator.
- User's password.
- Preset with configurations.
- Independent output gain per channel.
- Remote output with 300mA max.
- Operating voltage 9V~16Vdc.
- Bluetooth interface available on Connect version.

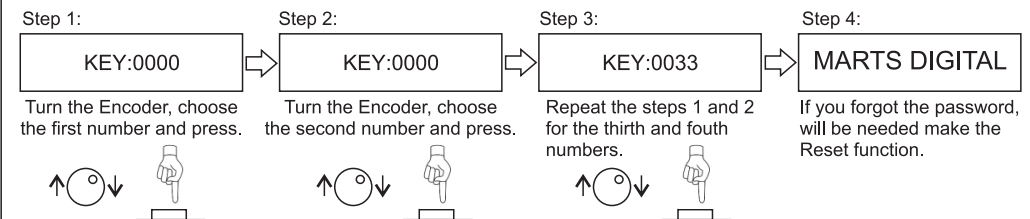
### 5.12 - PINK NOISE

Pink Noise Generator to make easy the system alignment:



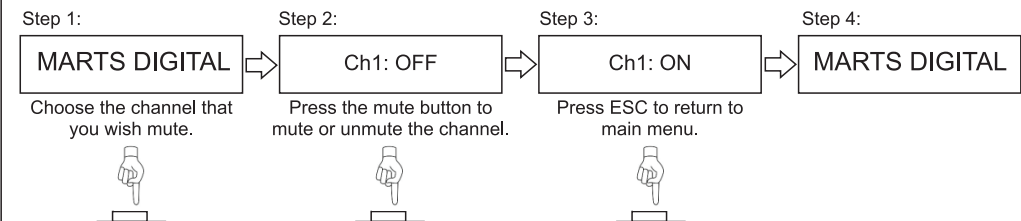
### 5.13 - PASSWORD

Define a password to protect the configurations:



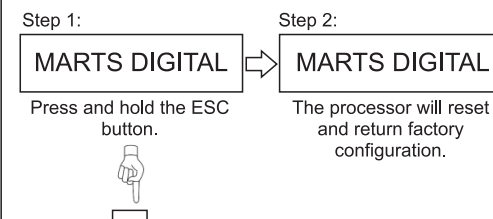
### 5.14 - MUTE

To mute a output, select the channel and press the Mute button to change the mute status.



### 5.15 - RESET

To make a reset of the processor to factory configurations, return to initial display, press and hold the ESC button, on a few seconds, the processor will be restarted.



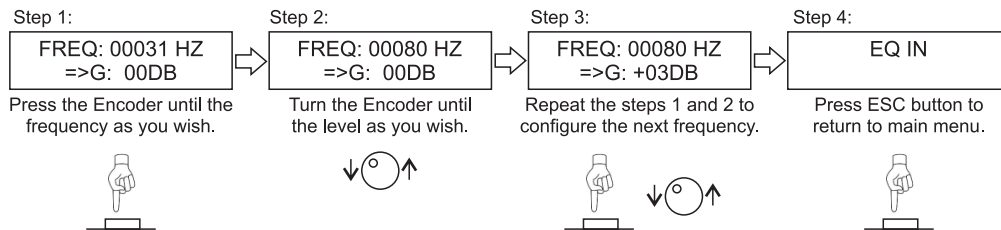
#### Attention

Will be necessary remake all the configurations, because the reset return the standart values.

Before to do it, disconnect all the outputs.

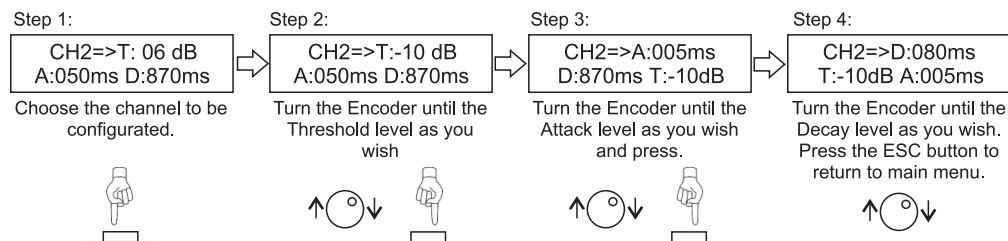
### 5.9 - EQ IN

Input equalizer allows level up/down the signal by setting a frequency between 20hz and 20khz with 28 bands spaced by 1/4 octave.



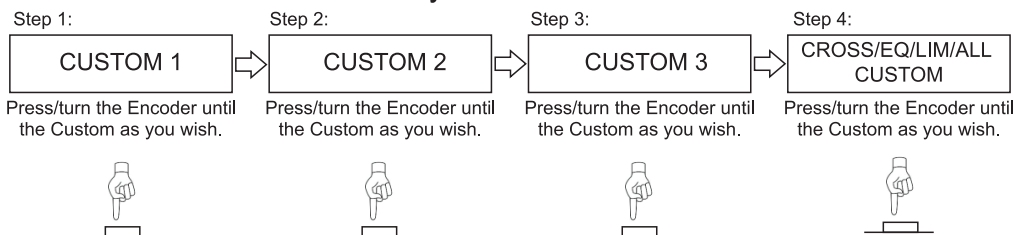
### 5.10 - LIMITER

Choose a limit for the audio signal doesn't pass the level max set.



### 5.11 - CROSS/EQ/LIM/ALL CUSTOM

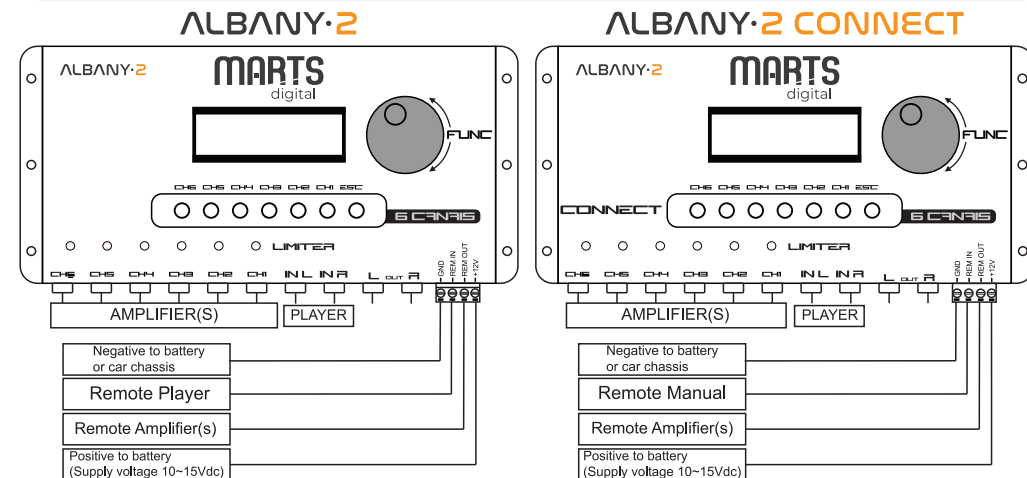
The Processor Presets save ALL configurations of the device, just choose the Preset and configure as you wish, so the values will be saved on device automatically.



#### Attention!

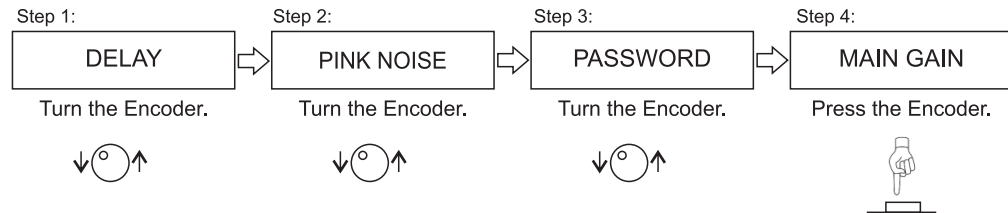
The Presets save all the configurations on the processor, if you choose another preset, this one has factory configurations, it will be needed configuration again as you wish.

## 3 - Installation



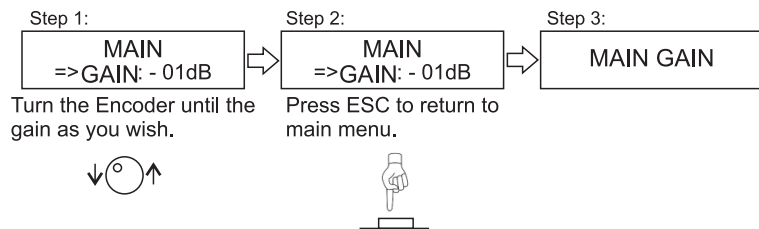
### 5.1 - ACCESSING THE MENU

Turn the Encoder to choose the menus, if you want open the menu, just press the Encoder



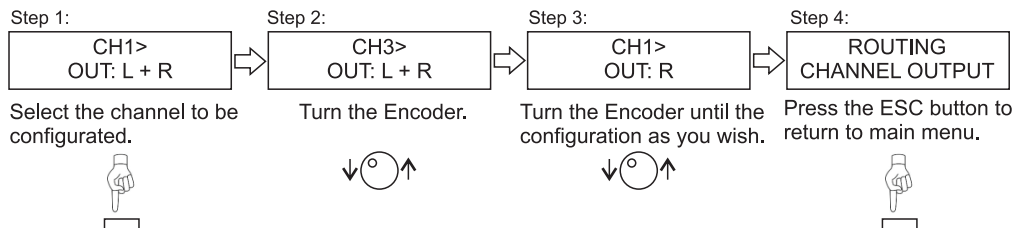
### 5.2 - MAIN GAIN

Adjust the main gain in the processor.



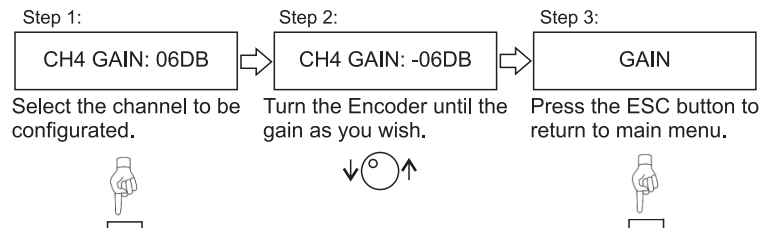
### 5.3 - ROUTING CHANNEL OUTPUT

Make the routing channels between input and output. If you select L, that channel will receive just the L side, when you select R, that channel will receive just the R side. If you select L+R, the channel will receive both signals (mono).



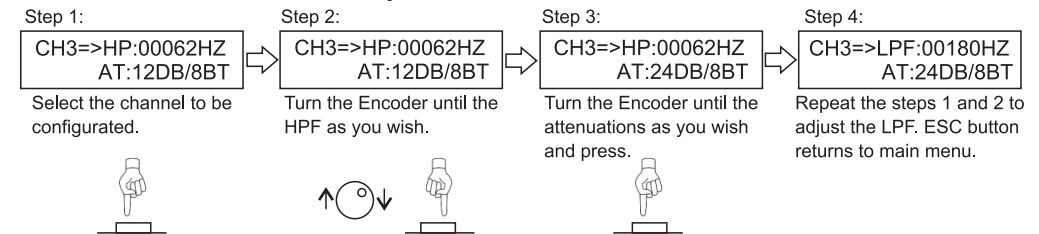
### 5.4 - GAIN

Allow change the independent gain per each channel.



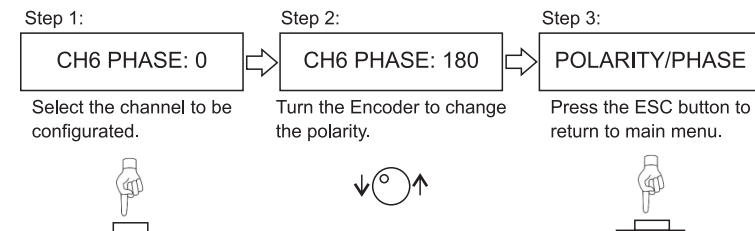
### 5.5 - CROSSOVER

Allow eliminate the frequencies that you don't need, it has filter Butterworth, Linkwitz-Riley and Bessel, with 6~48db/8<sup>a</sup>.



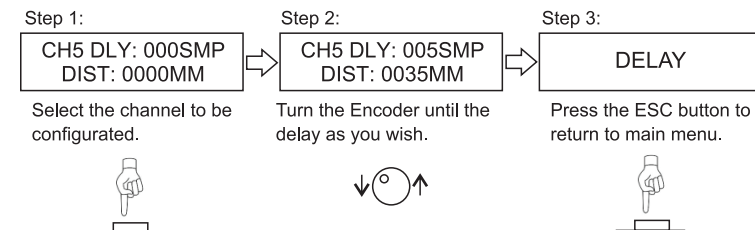
### 5.6 - POLARITY/PHASE

Allow change the polarity in the output.



### 5.7 - DELAY

Allow increase time delay to align better the speakers.



### 5.8 - EQ CHANNEL

Channel equalizer increase/decrease 3 independent frequencies per channel between 20~20kHz with frequency, gain and Q factor adjustments.

